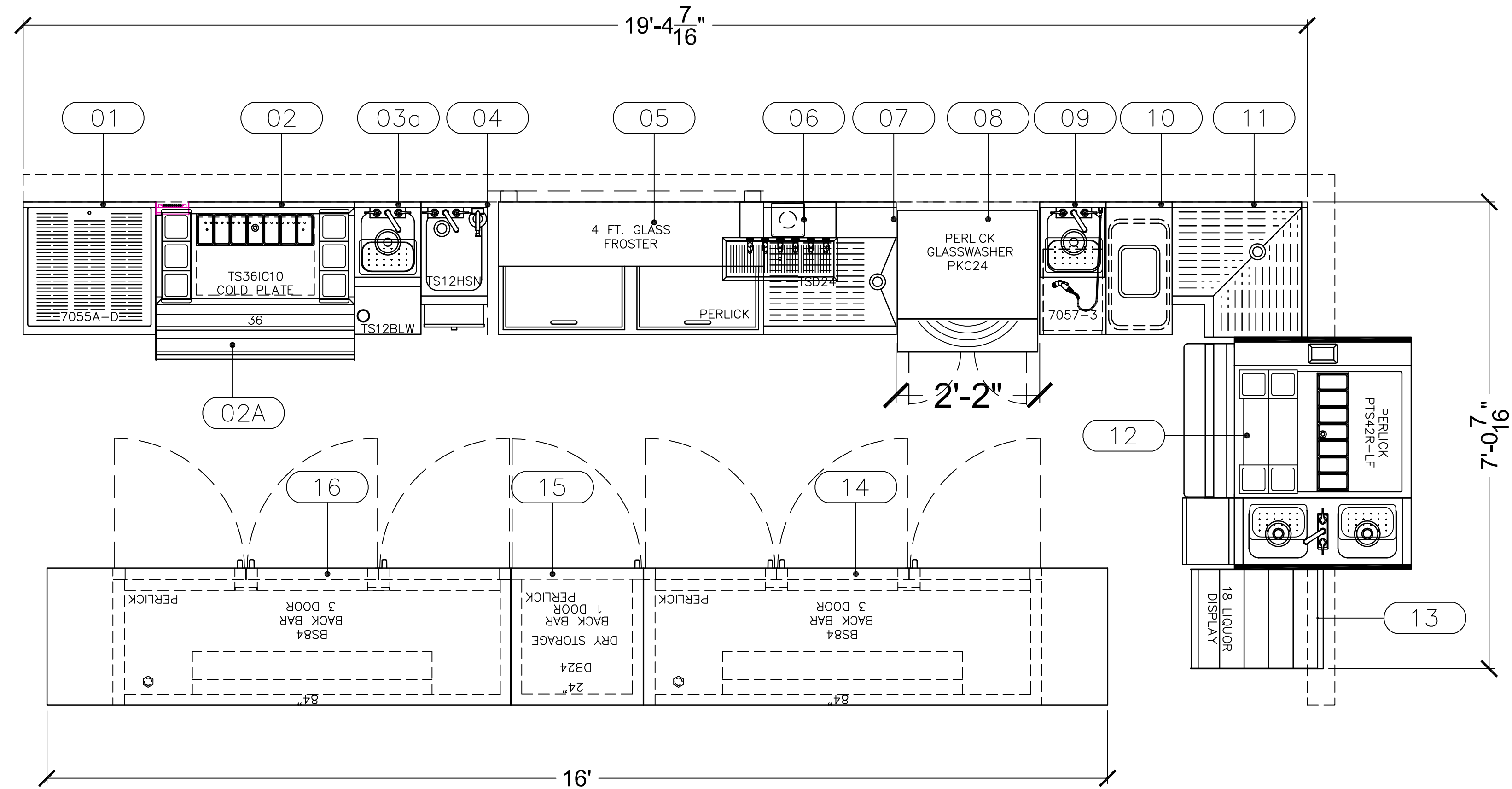


ELL BAR (R)

GLASSWASHER VERSION



PERLICK EQUIPMENT SCHEDULE

Item No	Qty	Model Number	Manufacturer	Equipment Category	Equipment Remarks	Volts	Cycle	Phase	Amps	HP	Plug	Electrical AFF. (in)	Cold Water Size (in)	Hot Water Size (in)	Indir. Drain Size (in)
01	1	7055A-D	Perlick	Underbar Dry Storage											1
02	1	TS36IC10	Perlick	Underbar Ice Chest	7055-265A Chase, BW6-36 Wells, CC7 Tray										0.5
02A	1	SR-D36	Perlick	Underbar Speed Rail											
03a	1	TS12BLW	Perlick	Underbar Blender Station	End Splash (L), 7055-52 Dump Box							18	0.375	0.375	1.5
03b	1	TS12BLW	Perlick	Underbar Blender Station	End Splash (R), 7055-52 Dump Box							18	0.375	0.375	1.5
04	1	TS12HSN	Perlick	Underbar Handsink									0.375	0.375	1.5
05	1	FR48	Perlick	Froster/Chiller, Glass/Mug/Plate		115	60	1	6.2	0.33	X				
06	1	4006-6B	Perlick	Dispensing Head, Draft Beer, Tee Tower	C18640A Drain Pan										
06	1	TS90D-FI	Perlick	Underbar Fillers & Drainboards											1.5
07	1	TSD24	Perlick	Underbar Fillers & Drainboards	7055-67A Bev.Chase (L)										1.5
08	1	PKC24	Perlick	Glasswasher		120	60	1	11.0	0.01		6	0.05	0.05	1.5
09	1	7057-3	Perlick	Glasswasher Accessory									0.375	0.375	1.5
10	1	TSF12BTB	Perlick	Bridge Trash											
11	1	TS90D-FI	Perlick	Underbar Fillers & Drainboards											
12	1	PTS42R-LF	Perlick	Underbar Pass-Thru Service Station	CC7 Cndmt. Tray								0.5	0.5	0.5
13	1	TS18LS	Perlick	Underbar Liquor Display	BG18 Guardrails										1.5
14	1	BS84*L	Perlick	Back Bar Equipment	Adj. Legs 6-7.25"	120	60	1	6.3	0.33	X				
15	1	DB24	Perlick	Back Bar Equipment	Adj. Legs 6-7.25"										
16	1	BS84**R	Perlick	Back Bar Equipment	Adj. Legs 6-7.25"	120	60	1	6.3	0.33	X				

- SYMBOLS**
- ✦ H HOT WATER CONNECTION
 - ✦ C COLD WATER CONNECTION
 - ✦ D DRAIN (ICE CHESTS)- 1/2" MALE NPS
 - ✦ D DRAIN - 1-1/2" MALE NPS
 - ⚡ ELECTRICAL CONNECTION
 - Ⓜ DUPLEX OUTLET

I HAVE CHECKED ALL DIMENSIONS AND EQUIPMENT LOCATIONS ON THIS DRAWING FOR ACCURACY:

Approved for fabrication as shown.

Approved for fabrication with changes as noted.

Drawing requires changes as noted; submit revised drawing for my approval.

PLEASE TYPE OR PRINT:

NAME _____ DATE _____

TITLE _____ DATE _____



** DO NOT USE THIS DRAWING FOR CONSTRUCTION SPECIFICATIONS **
 This drawing is provided solely to illustrate the positioning of Perlick Equipment.
 Non-Perlick Equipment or Features which have been copied or derived from other sources are shown on this drawing for reference only.

SCALE: 3/4" = 1'-0"	PROJECT: BAR 7 Ell (R) w/ Glasswasher
REV. DATE:	DATE: 05/10/2016
DRAWN BY: jab	DRAWING NO.: 1002104
CHECKED BY:	EXHIBIT NO.: A
DATE: 05/10/2016	PROJECT NO.: 1002104
1 of 1	PROPERTY OF THE PERLICK CORP. NOT TO BE COPIED OR USED DETRIMENTAL TO OUR INTERESTS.