



**STORAGE CABINETS WITH FULL DRAINBOARD TOP**  
12-48"W x 24"D



SC24 (Shown with Door)



SC30

JOB	
AREA	
ITEM NO.	
MODEL NO.	

MODELS
TS SERIES
SC12
SC16
SC18
SC24
SC30
SC36
SC42
SC48

MODEL NUMBERS - SC12, SC16, SC18, SC24, SC30, SC36, SC42, SC48

**KEY PRODUCT FEATURES AND BENEFITS**

- Embossed stainless steel drainboard top
- Adjustable stainless steel shelf for glass racks
- Optional stainless door can be factory or field installed, with or without locks
- Sound deadened work surfaces for quiet operation
- Storage cabinets complete an upscale underbar equipment setup
- Creates a uniform look across any bar
- 6" stainless steel backsplash
- Stainless steel legs with 1" adjustable feet
- Designed to be modular, provides custom configurations using standard components
- All stainless steel construction

**Quick Features:**

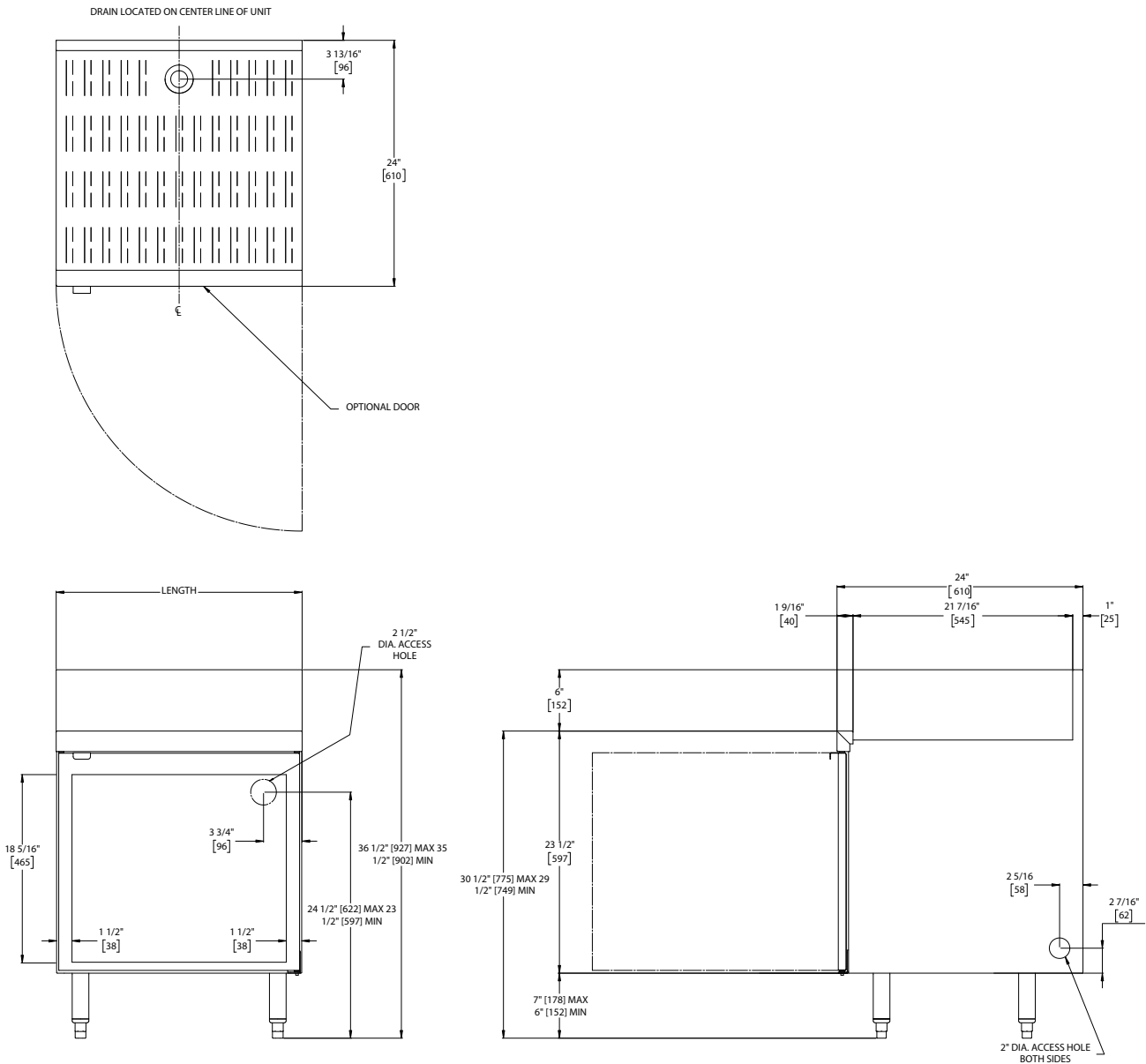
- Fits (2) 20" x 20" glass racks
- Adjustable feet for easy installation and leveling
- All stainless construction for durability
- Stores plenty of glassware right where your bartender needs them to handle a rush



**STORAGE CABINETS WITH FULL DRAINBOARD TOP**  
**12-48"W x 24"D**

MODEL NUMBERS - SC12, SC16, SC18, SC24, SC30, SC36, SC42, SC48

MODEL NOS.		SC12	SC16	SC18	SC24	SC30	SC36	SC42	SC48
<b>DIMENSIONS:</b> Inches (mm)	Length	12" (305)	16" (406)	18" (457)	24" (610)	30" (610)	36" (914)	42" (1067)	48" (1219)
	Weight (lbs)	30 (14)	35 (16)	40 (18)	65 (30)	80 (36)	100 (45)	115 (52)	120 (54)
<b>MATERIALS</b>	General Parts	Stainless Steel							
	Backsplash	Stainless steel 6" high (4" high optional) with 1" return at the top, mechanically fastened and sealed with steel support brackets.							
	Drainboard	Embossed stainless steel, 21 7/16" deep front to back. All horizontal and vertical edges 1/4" radius with balled corners. Stainless steel drain socket. Drain location is back center.							
	Legs	1-5/8" tubular, stainless steel with 1" adjustable thermoplastic foot							
	Shelf	Adjustable shelf is reinforced stainless steel.							
<b>MECHANICALS</b>	Plumbing	Drain connection: 1-1/2" NPS male							
<b>DOOR(S)</b>	Optional	Stainless steel outer and inner door panels. Dual magnetic catches per door. <b>Note:</b> Cabinets 30" or longer have two doors.							



Form No. SB03  
 Rev 06.28.21